

Enabling the Serial Port on the HP MediaSmart Server

Author: Charles Kalapati

Date: June 2008

Revision 1

Requirements:

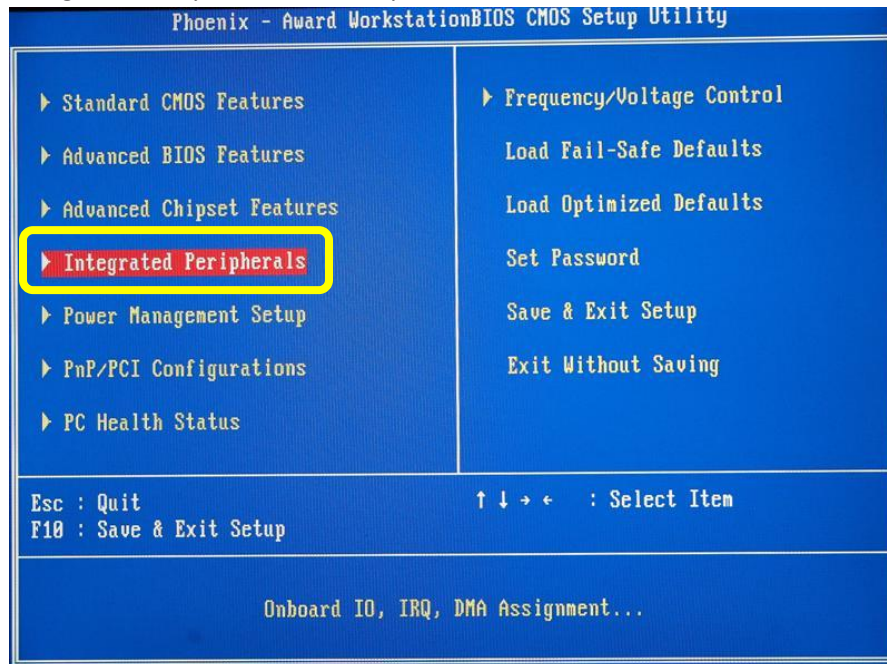
1. A VGA cable capable of viewing the boot process.
2. A cable that can convert the TTL signals from the HP MediaSmart Server to regular serial signals (RS 232) compatible with a desktop computer.
3. A PS2/USB keyboard cable to navigate through the BIOS.

Note: A VGA-PS2-Serial cable can be purchased via email request to mss_cable_service@yahoo.com.

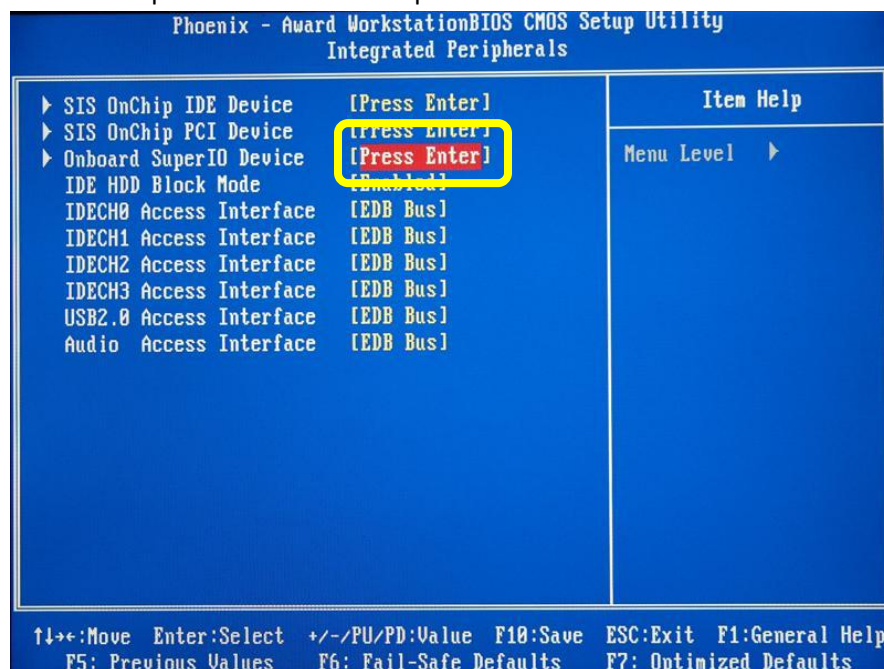


Enabling the Serial Port

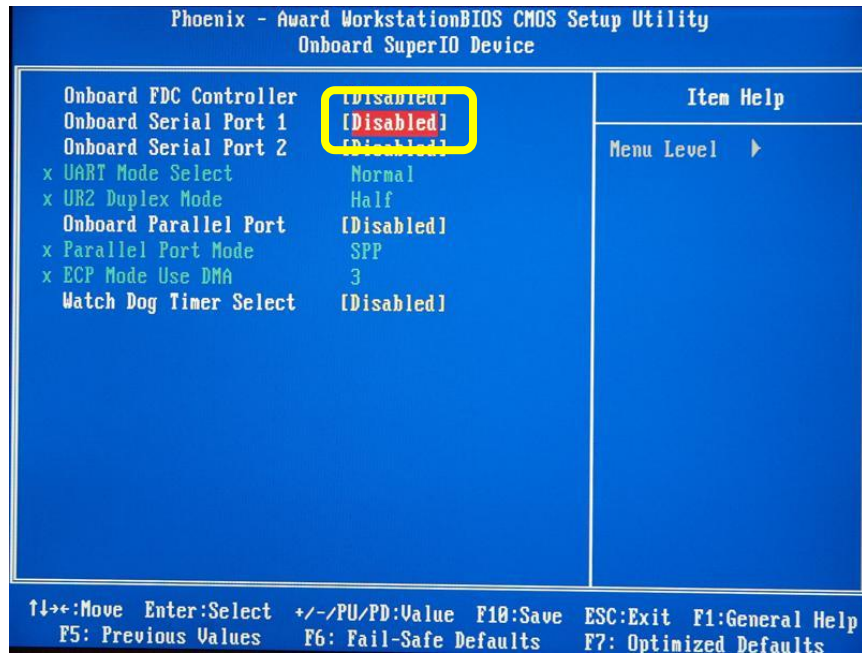
1. With your VGA-PS2-Serial cable plugged in, boot your MediaSmart server computer and press the “F12” key to enter into BIOS.
2. Select the “Integrated Peripherals” menu option and hit “Enter”.



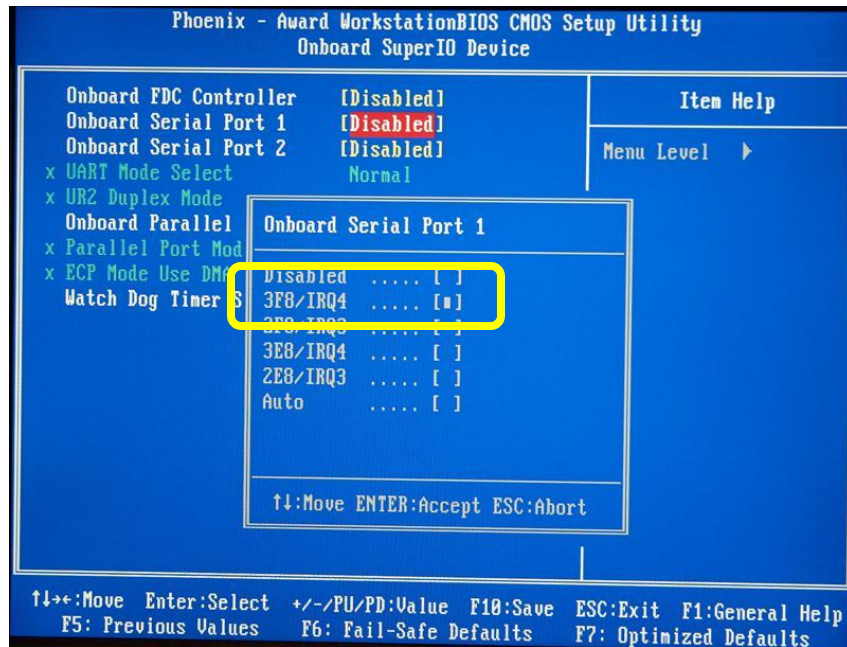
3. Select the “Onboard SuperIO Device” menu option and hit “Enter”.



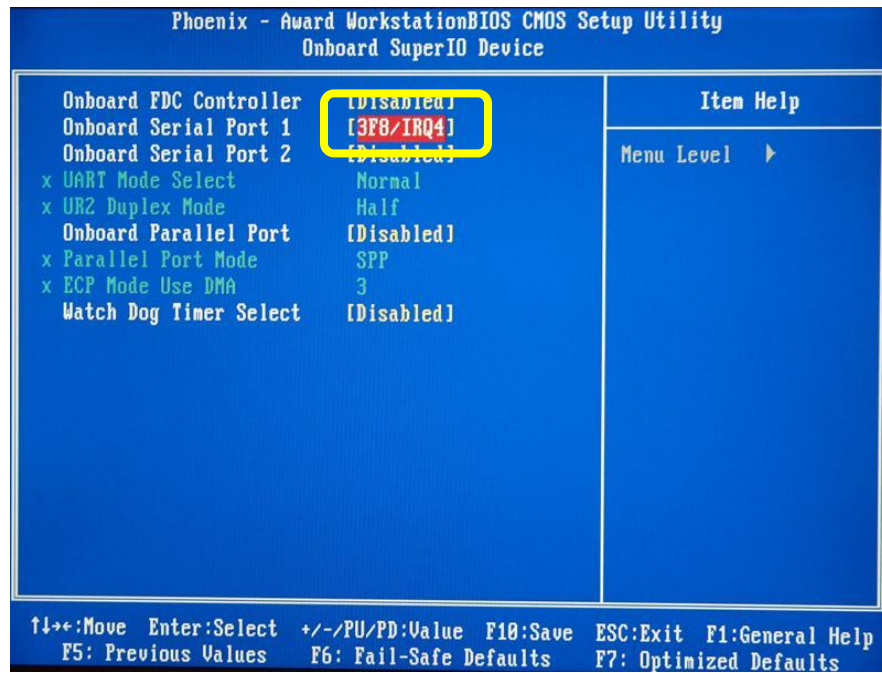
4. Select the "Onboard Serial Port 1" menu option and hit "Enter".



5. Select the "3F8/IRQ4" option and hit "Enter".



6. Verify that the "Onboard Serial Port 1" option is "3F8/IRQ4".



7. Press the "F10" key to Save your settings and press the "Esc" key to exit BIOS.
8. You have successfully enabled your HP MediaSmart Server's serial port.